

Getting Started with Planet Explorer

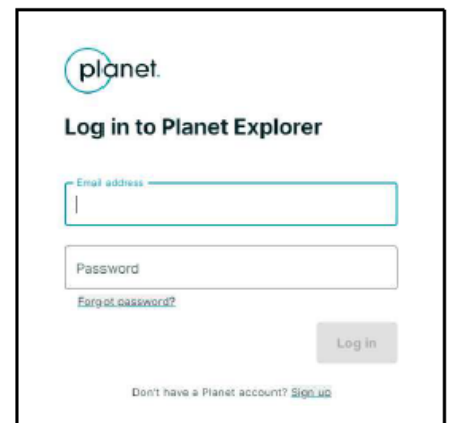
Accessing daily and monthly high-resolution imagery across NSW

Background

Planet Explorer enables users to view daily and monthly imagery provided by Planet Labs. This imagery covers the whole of NSW and can be viewed via Planet Labs view, Planet Explorer.



How to get a Planet Account

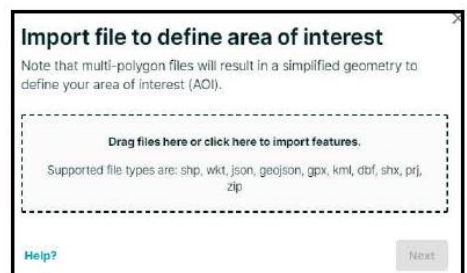
1. Internal to DPE, submit a request via CS Connect
2. Include: name, email, phone, outline of request. Most important is to provide a shapefile of your area of interest.
3. A short description of your project
4. If you are external to DPE, please email spatial.imagery@environment.nsw.gov.au and provide all the above details
5. You will receive an email with your account details.
6. Go to <https://www.planet.com/explorer> and enter your username and password as per your email



Planet Explorer

Search:

1. Search by location: enter an address into the search bar and enter. You can search Monthly images by panning around
2. Search by area of interest: use the tool bar (right) to choose to either draw and/or upload a shapefile for an area of interest. Daily imagery outside of this area is not available to view above zoom level 15
3. An AOI can be removed by using the bin icon.  
4. To import a geometry file (shapefile, GoeJSON, KML or WKT), click on the 'import file to define area of interest'.
5. The shapefile must be in GCS-GDA94



Date Ranges:

1. Narrow searching by inserting a date range
2. Click on Dates and calendar appears
3. You can add a range by change Year and months by using the arrow button beside the months
4. Click on the start date, and drag to the end date – the date range will be highlighted



Filters

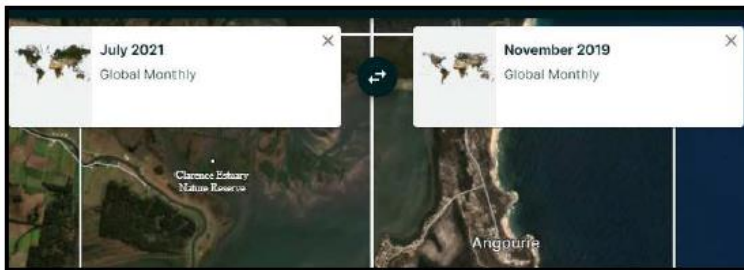
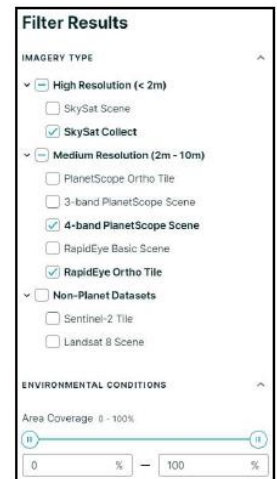
1. Image searches can be refined by using the filter
2. You can choose to search different resolution images
3. Searches can be saved

Comparison Tool

1. Draw an AOI for the area you want to compare
2. From the menu on the right-hand side, choose Compare
3. Drag the images you want to compare into either side of the screen
4. Use the vertical bar to compare



Tool



Downloads

Spatial Imagery Services team are responsible for managing all Planet imagery downloads. Please contact the team if you require downloaded images

Further information



Science Division, Spatial Imagery Services Team are responsible for the administration and management of Planet in DPE.

For enquiries email spatial.imagery@environment.nsw.gov.au

Or contact Sue Rea Sue.Rea@environment.nsw.gov.au

0266 402577