

Planet SkySat Imagery for NSW

Using high resolution imagery for decision making

Background

NSW Government have been capturing SkySat imagery since 2018. SkySat satellite passes twice a day capturing 50cm high resolution images (Figure 1). All imagery capture is dependent on cloud cover. SkySat is recommended for areas under 100sqkm and suitable for large and small property size investigation. All SkySat imagery captured for NSW Government is available to view online in Planet Explorer.

SkySat tasking is available free of charge to all NSW Government.



Figure 1: left image Planetscope (3m) right image SkySat (50cm)

Tasking

To request tasking (image capture) of SkySat an area of interest, a shapefile or address is required. Tasking can be commenced within a day of request and generally takes from 2 days to 3weeks to fulfil dependent on cloud cover. To request SkySat tasking, you can email spatial.imagery@environment.nsw.gov.au

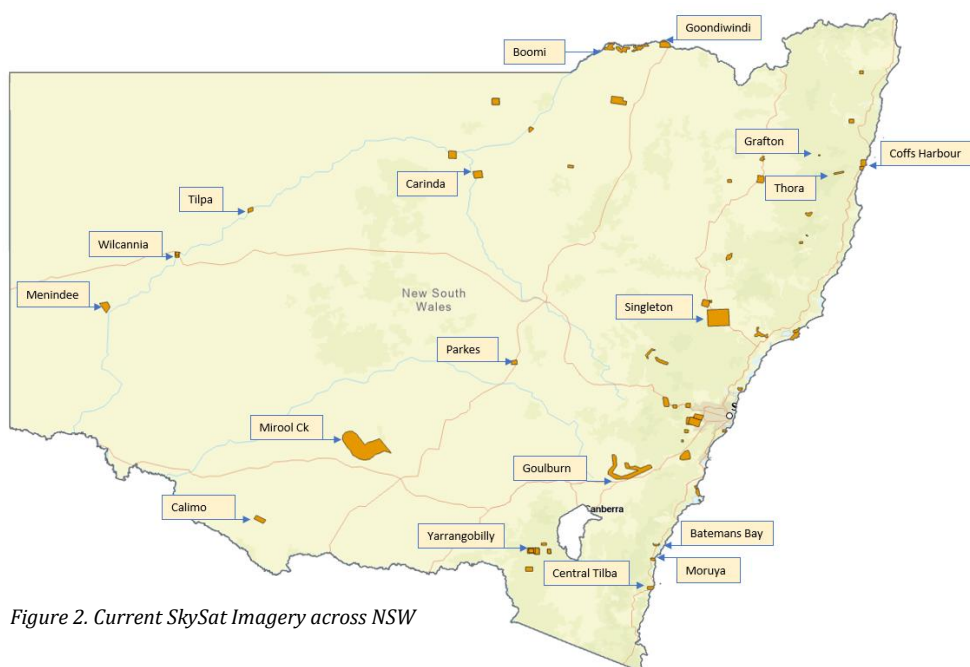
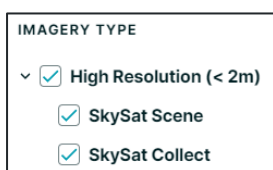
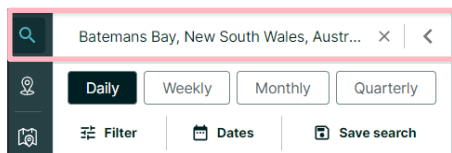


Figure 2. Current SkySat Imagery across NSW

Viewing SkySat

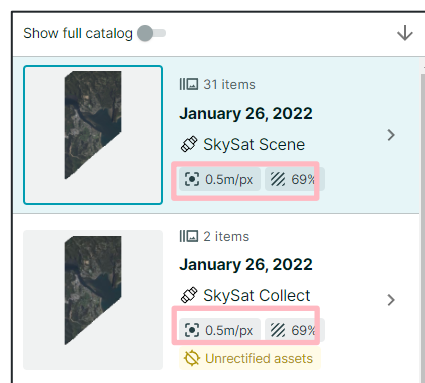
Planet Explorer allows users to search through NSW imagery catalogue. The details below will outline how to view SkySat imagery in Planet Explorer. Refer to Figure 2 for current SkySat imagery available.

- Login to [Planet Explorer](#)
- Click on Search - enter location



- Click Filter and select High Resolution (<2m)
- De-select Medium Resolution
- Apply filters
- Remove date ranges

- If SkySat imagery is available for that area, it will be listed in the Catalog.
- The SkySat Collect image is an orthorectified composite of the SkySat Scene. The SkySat scene can consist of a high number of images.
- Your Planet Explorer account does not have provision for downloading. If you find imagery you would like access to, contact Spatial Imagery Services to provide the imagery.
- Skysat can also be viewed in Arcpro



Further information



Science Division, Spatial Imagery Services Team are responsible for the administration and management of Planet in DPE.

For enquiries email spatial.imagery@environment.nsw.gov.au

Or contact Sue Rea Sue.Rea@environment.nsw.gov.au

0266 402577